

**CONSORZIO DI BONIFICA INTEGRALE
BACINI MERIDIONALI DEL COSENTINO**

Via G. Russo 6 - 87100 Cosenza (CS)

CENSIMENTO DEGLI SCARICHI ESISTENTI

Deliberazione della deputazione amministrativa n. 71 del 26.04.2017

**TAV.
A**

**DOCUMENTAZIONE FOTOGRAFICA
(SECONDO LOTTO)**

martedì 05 febbraio 2018

Il Professionista

(Dott. Geom. Ing. Francesco Fucile)

STUDIO TECNICO - Dott. Geom. Ing. Francesco Fucile

Via Arena n. 35 - 87043 – Bisignano – (Cosenza) - Partita I.V.A. 0276 7070 788 – C.F.: FCL FNC 79C04 D086J
Cell. 328.0174426 - E-Mail: dottfucile@gmail.com - Pec: francesco.fucile@geopec.it

Punto 20



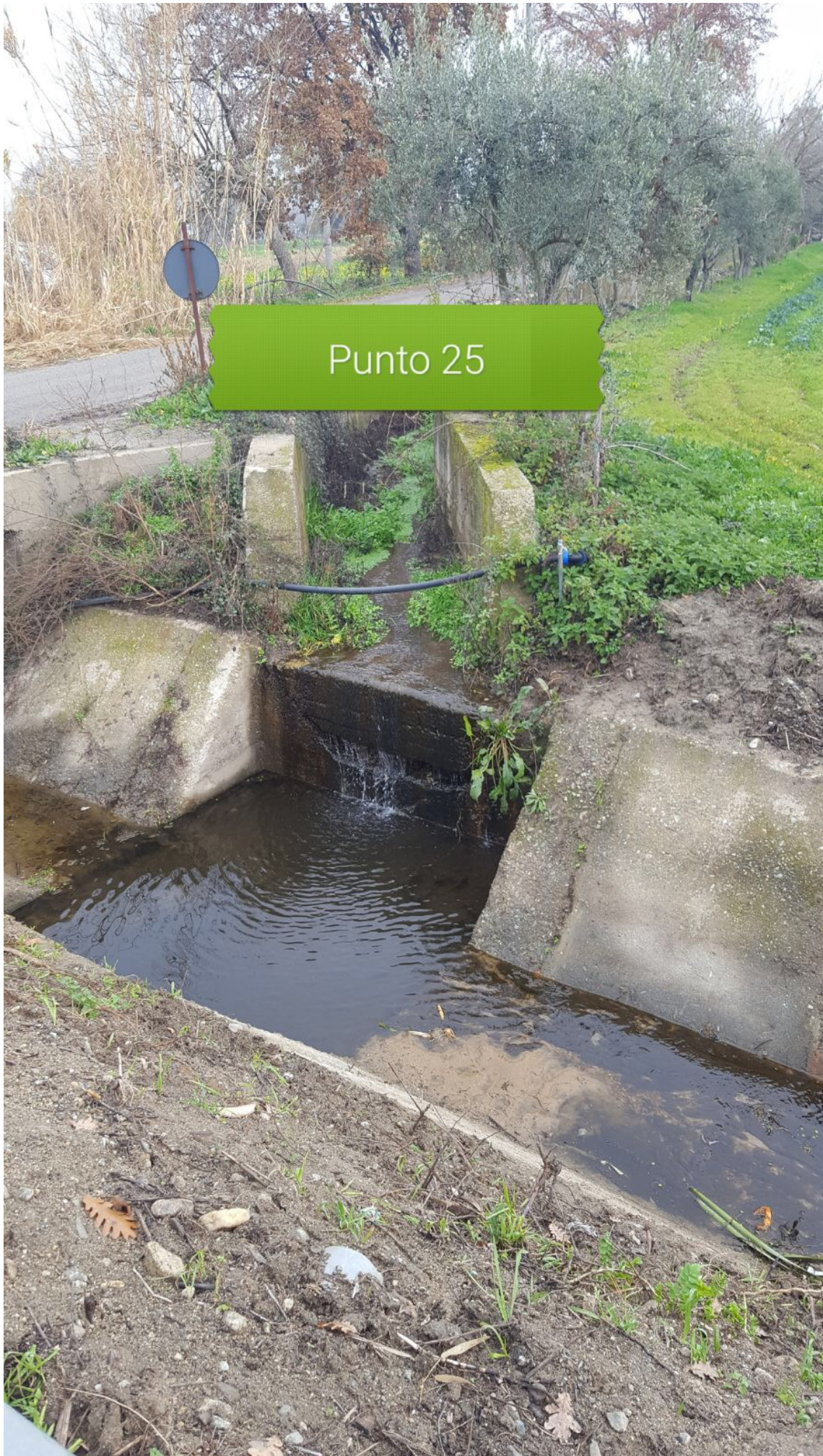


Punto 23





Punto 24



Punto 25



Punto 26



Punto 27



Punto 28



Punto 29



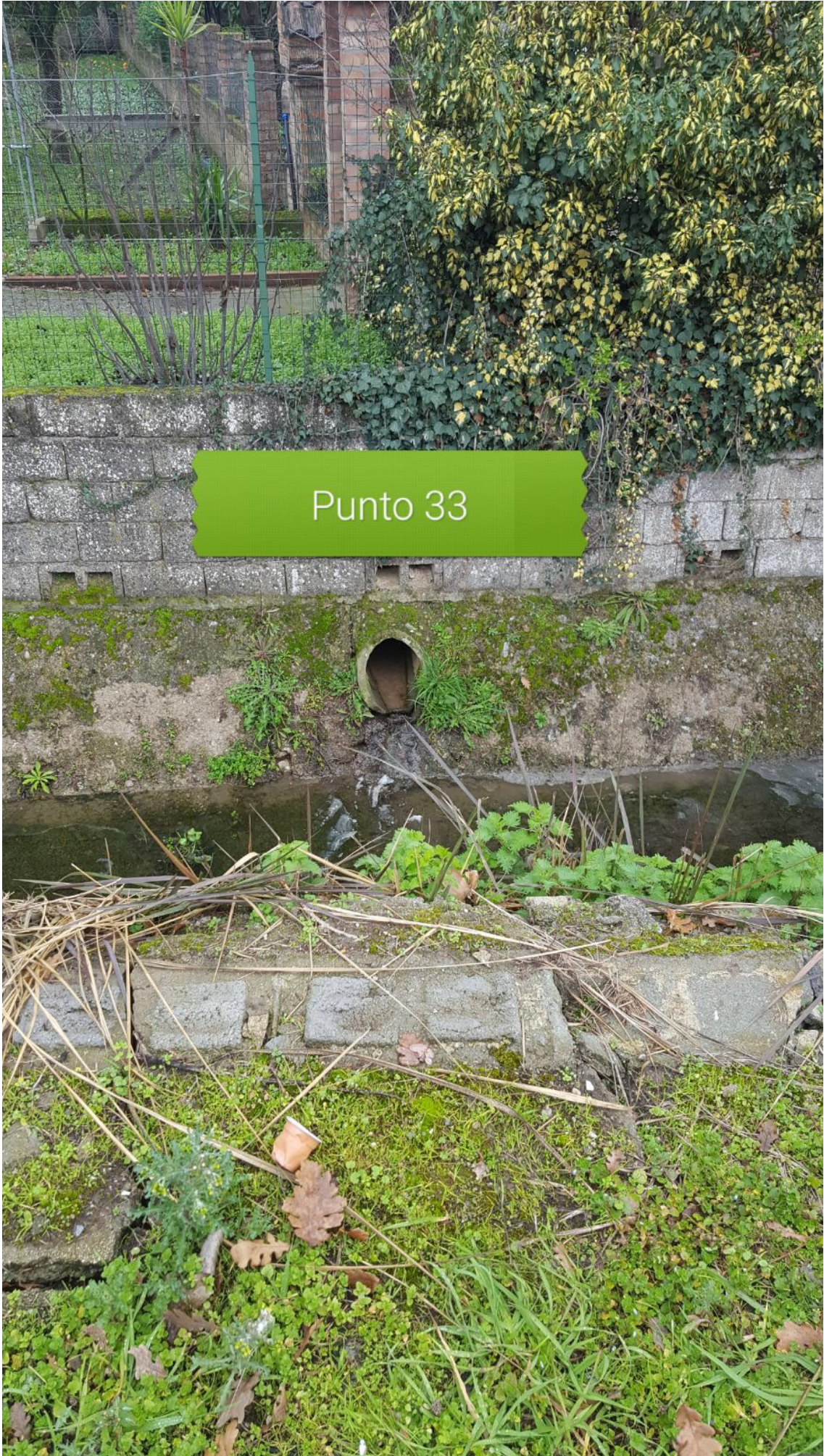
Punto 30



Punto 31



Punto 32



Punto 33



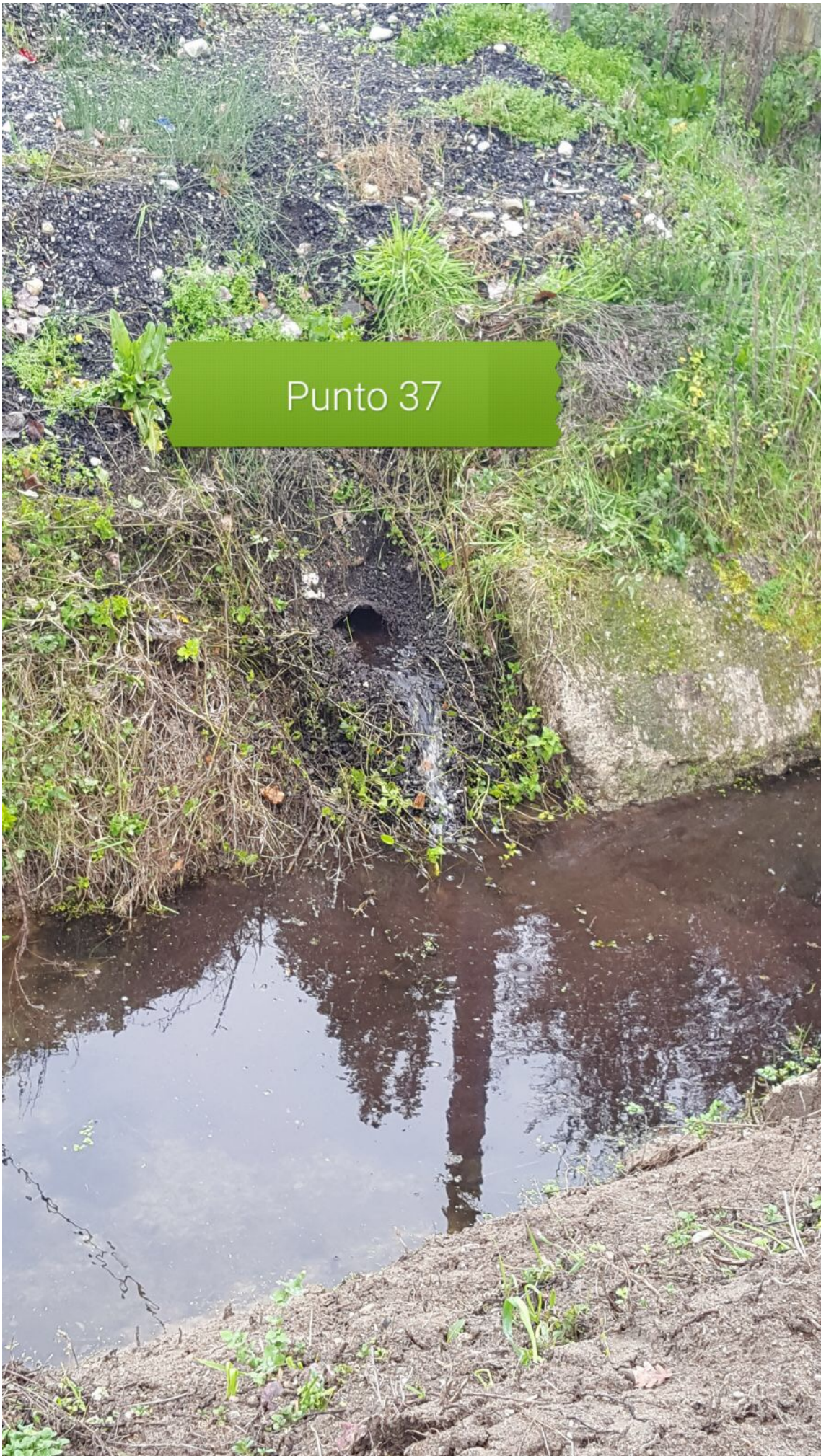
Punto 34



Punto 35



Punto 36



Punto 37



Punto 38

A photograph of a natural streambed. The streambed is composed of various sized rocks and pebbles, some of which are covered in moss. The water is shallow and clear, flowing over the rocks. The surrounding area is densely vegetated with various plants, including tall grasses, small green plants, and fallen brown leaves. A green rectangular text box is overlaid on the image, containing the text "Punto 39".

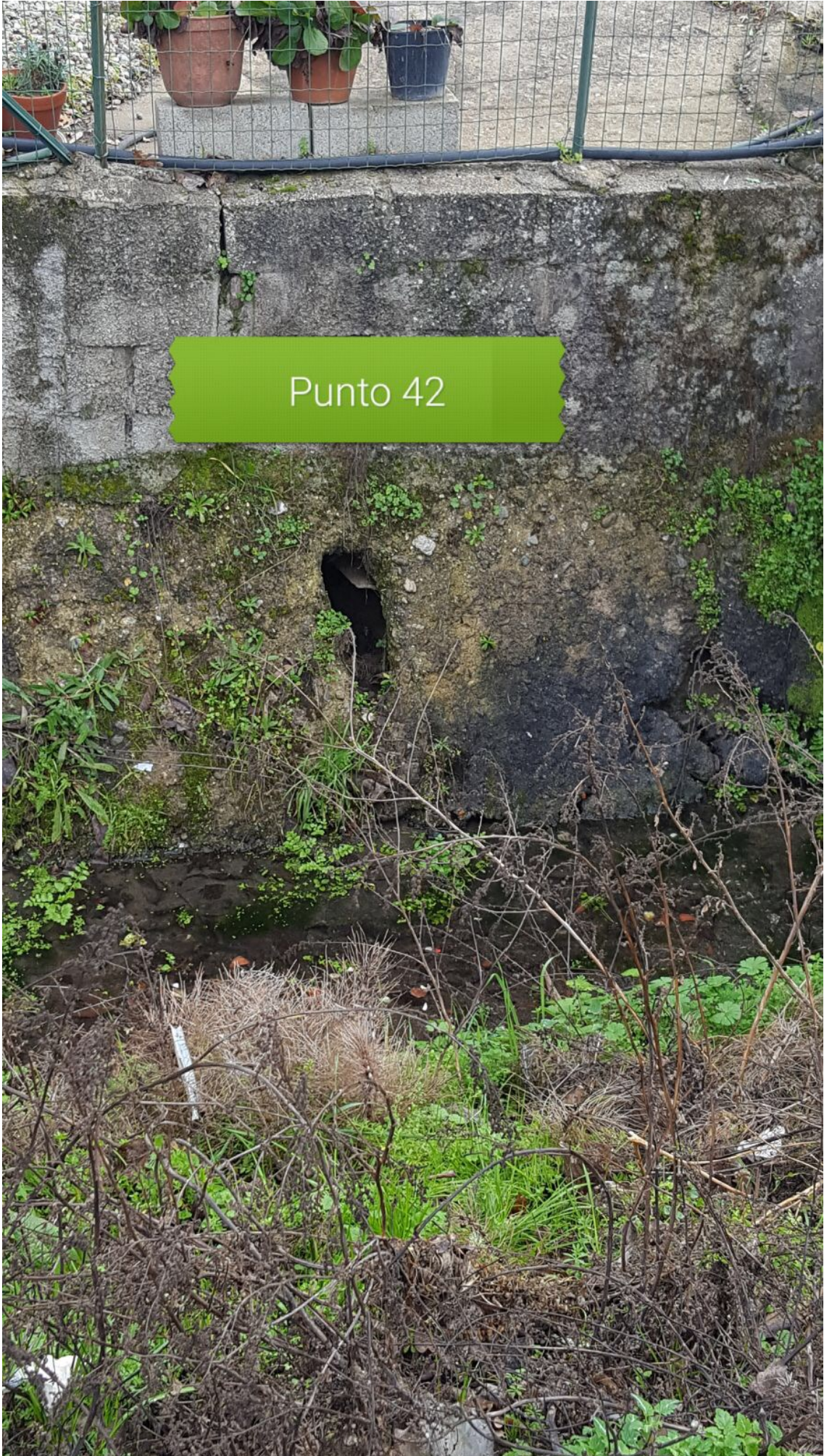
Punto 39

A photograph showing a stream bank. The bank is composed of brown soil and is covered with various green plants, including mosses and small leafy vegetation. Some dry twigs and a single brown leaf are also visible. At the bottom of the frame, a stream of dark, still water flows. A green, rounded rectangular label with the text "Punto 40" is superimposed on the upper part of the bank.

Punto 40



Punto 41



Punto 42

Punto 43



Punto 44



Punto 45



Punto 46



Punto 47





Punto 48 - 49



Punto 50



Punto 51



Punto 52 - 53

Punto 54 -55

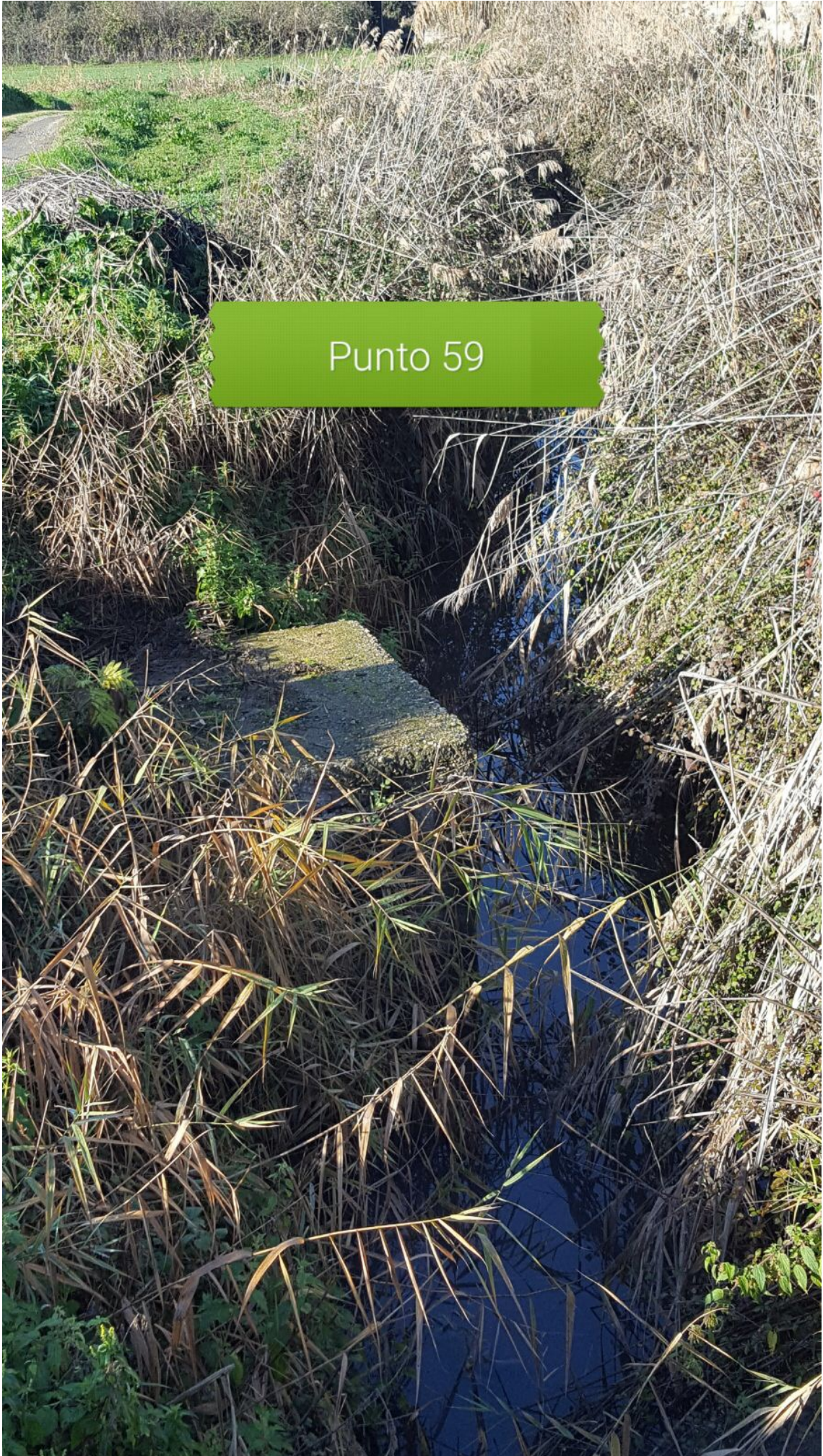




Punto 56



Punto 57



Punto 59



Punto 60



Punto 61



Punto 62



Punto 63

Punto 64



Punto 65



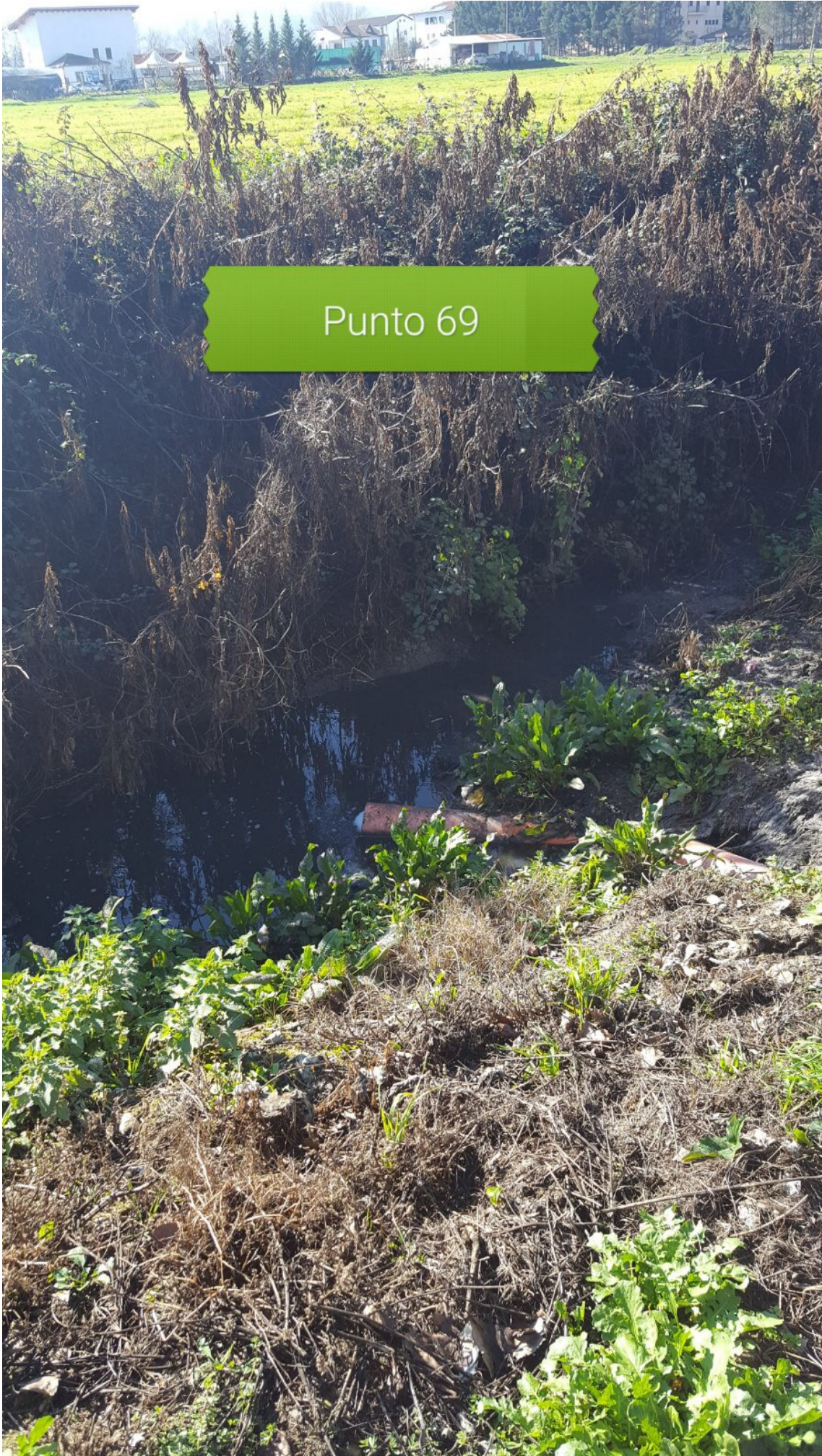




Punto 67

Punto 68





Punto 69



Punto 70

Punto 71 - 72

